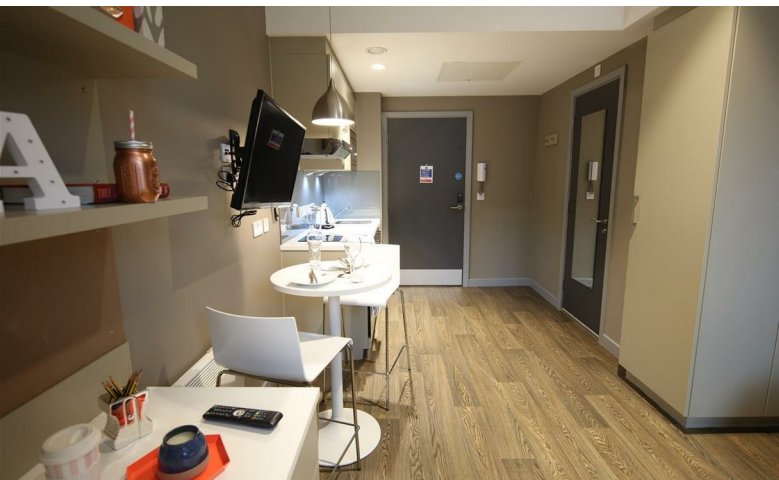




In partnership with

URBAN STUDY



£891 Per month

Jesmond Apartments, 122 Grantham Road, Newcastle Upon Tyne, NE2 1QX

# Jesmond Apartments, 122 Grantham Road, Newcastle Upon Tyne, NE2 1QX

Jesmond Apartments is a high-spec, contemporary and bright student and young professional apartment building, with a glass fronted entrance to the communal area that stretches the entire length and breadth of the building.

It's close to Newcastle and Northumbria University campuses as well as the city centre. Shopping centers, bars, restaurants, nightlife and parks are all on your doorstep. You can walk everywhere, but the bus stop is also just outside the front doors.

As well as modern, clean bedrooms complete with kitchenette and an ensuite bathroom, Urban Study residents have access to all the communal areas and amenities. To name a few: cinema room, dinner party room, gym, parking, and laundry.

## Credit References and Deposit

Prospective tenants will be required to complete a credit referencing application payable whether successful or not. Prior to taking occupation of the property you will be required to pay a deposit of 1½ times the monthly rent, the first months rent in advance and an administration fee.

## Directions

Energy Efficiency Rating		
	Current	Potential
Very energy efficient - lower running costs		
92-100 <b>A</b>		
81-91 <b>B</b>		
69-80 <b>C</b>		
55-68 <b>D</b>		
39-54 <b>E</b>		
21-38 <b>F</b>		
1-20 <b>G</b>		
Not energy efficient - higher running costs		
England & Wales		
EU Directive 2002/91/EC		